

CPCC Harper Campus Phase IV is a new building on the campus of the corner of Nations Ford Road and W. Hebron St. Charlotte, North Carolina. The project consists of new construction of 89,478 square feet of new construction and 33,871 square feet of renovation. The project will include classrooms, computer labs, program specific labs (welding, electrical, plumbing, HVAC, material lab), emporium labs, middle college, faculty offices, academic support library services, ESS space and architectural technology areas. Project also includes construction a remote parking lot of Hebron Street which will provide 454 parkingspaces. An extension to the lower parking lot is also included that will provide 157 additional parkingspaces.

Project Schedule

Milestones

- Substantial Completion 11.15.18
- Final Completion 11.29.18

Upcoming Activities for the month of June

- Insulate OH Ductwork at Plaza Level. 6.1.18
- Prep & pour transformer pad at lines P-T 6.1.18
- Exterior Framing at Hebron – East Elev. 6.4.18
- Set & Install roof top equipment – Hebron 6.4.18
- Brick & Caste Stone at Hebron - West Elev. 6.9.18
- Spray Air Barrier at Hebron – North Elev. 6.16.18

Contract Status

- Number of Bid Packages: 31
- Number of Bid Packages Awarded: 29
- Total Number of Contractors: 26
- Number of Contracts Issued: 29
- Number of Contracts Executed: 28

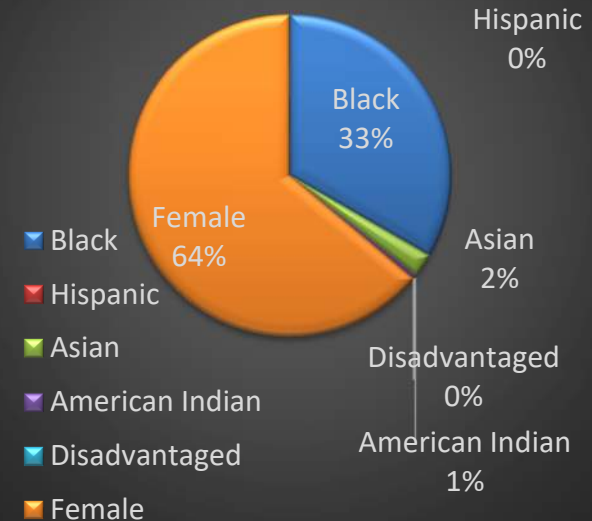
Balfour Beatty Project Team

- Project Manager: Dan Morris
- Superintendent: Heath Brafford
- Sr. Project Engineer: Asia Evans
- Sr. Project Engineer: Steven Williams
- Field Engineer: James Moore
- Field Engineer: John Cuminale

Safety Highlight

- No. of Incidents: 0
- No. of Near Misses: 5
- Total Man Hours: 9,232
- Cumulative Man hours for job (Including this month) 99,383

Minority Percentage



Accounting

- Contract Total: \$30,125,283
- Amount to Date Billed: \$13,498,481
- Percentage Billed: 44.81 %

QA/QC

- Completing Structural & Field Reports as Received.

Change Management

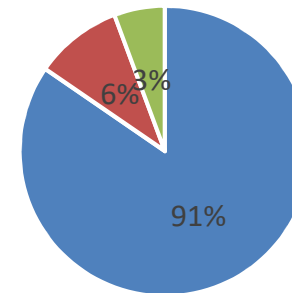
Projected Changes to Date: \$103,261

Currently Pricing the Following:

- ASI's #004.1, #004.3, # 004.4, #06, #08, #09, #010, #012 #013, #013.1 & #013.2.
- Request for Price (RFP) #03, #04, #05, #06, #07, #08(Renovations), #08(ATB) & #09.

RFI's & Submittals

- Open RFI's: 5
- Total RFI's to date: 144



■ Reviewed ■ Open ■ In Review

- Open Submittals: 20
- Reviewed Submittals 289
- In Review: 10
- Total Submittals to date: 319

Allowance/Cont Tracker

<u>Allowances/Credits</u>	<u>Spent</u>	<u>Total Allow/Credits</u>
\$0.00	\$0.00	\$0.00

Progress Photos



North West Elevation

Progress Photos



West Elevation – Level 1

Progress Photos



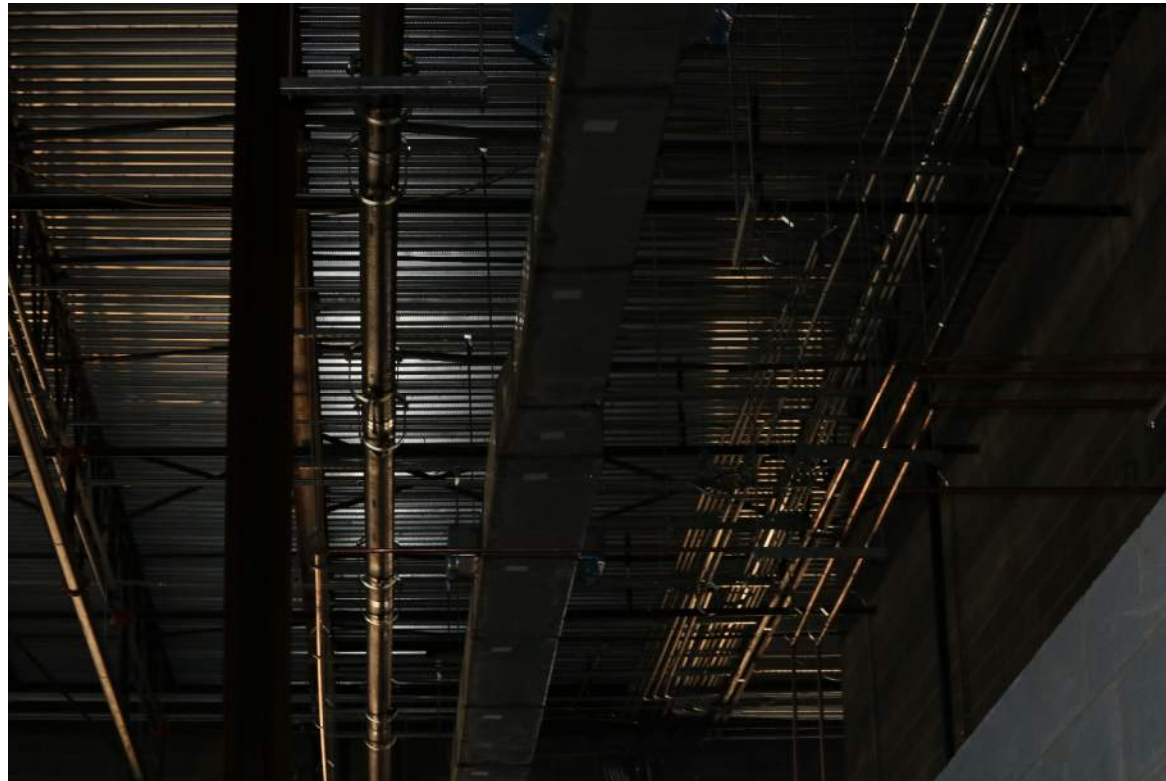
Overhead Roll Up Door Opening (131B) –
SW Corner

Progress Photos



Framing of Welding Offices on Plaza Level

Progress Photos



MEP overhead rough-in on Plaza Level

Progress Photos



SE Corner of Plaza Level

Progress Photos



Backflow Prevention Assembly – East Side Near Mechanical Yard.

Progress Photos



727.520.8181
www.aerophoto.com

CPCC Harper

Image # 88
Date 05.22.18

May Aerial Photo